

木荷属(山茶科)一新变种——扁果银木荷

罗强

(西昌学院,四川 西昌 615013)

摘要:报道了四川德昌县发现的山茶科(Theaceae)木荷属(*Schima* Reinw.)一新变种——扁果银木荷(*Schima argentea* Pritz. var. *platycarpa* Q. Luo)。新变种花瓣长2~2.6 cm,宽1.6~2.2 cm,内面基部被柔毛,蒴果扁球形,直径1.7~2.1 cm,高1~1.3 cm等特征与原变种相区别。在电子扫描显微镜下观察了银木荷和扁果银木荷的花粉粒,银木荷花粉粒表面纹饰为网状,具穿孔,而扁果银木荷花粉粒外壁为网状,不穿孔。

关键词:山茶科;木荷属;扁果银木荷;新变种;四川

中图分类号:Q949.758.4

文献标识码:A

文章编号:1005-3395(2011)03-0228-02

doi: 10.3969/j.issn.1005-3395.2011.03.006

Schima argentea Pritz. var. *platycarpa* Q. Luo, A New Variety of *Schima* Reinw. (Theaceae) from Sichuan, China

LUO Qiang

(Xichang College, Xichang 615013, China)

Abstract: *Schima argentea* Pritz. var. *platycarpa* Q. Luo, a new variety of *Schima* Reinw. from Xichang, Sichuan, China, is described. This new variety is different from the typical variety by having big petals with pubescence at ventral base, 2–2.6 cm long and 1.6–2.2 cm wide, capsules oblate, 1.7–2.1 cm in diameter and 1–1.3 cm height. Pollen morphology of *Schima argentea* Pritz. var. *argentea* and *S. argentea* Pritz. var. *platycarpa* Q. Luo were observed under scanning electron microscopy (SEM), the results showed that exine ornamentation of *Schima argentea* Pritz. var. *argentea* was reticulate with perforation, and that is reticulate without perforation in this new variety.

Key words: Theaceae; *Schima* Reinw.; *Schima argentea* Pritz. var. *platycarpa* Q. Luo; New variety; Sichuan

扁果银木荷 新变种 图 1

Schima argentea Pritz. var. *platycarpa* Q.

Luo, var. nov. Fig. 1

A typo differt petalo 2–2.6 cm longo, 1.6–2.2 cm lato, basi interne pilosulo, capusula oblata, 1.7–2.1 cm diametro, 1–1.3 cm alto.

China. Sichuan(四川): Dechang Xian(德昌县), alt. 2560 m, in broad-leaved forest(阔叶林中), 2010–08–07, Q. Luo and T. J. Wang(罗强、王同军)0821 (holotype, IBSC); the same locality, 2010–08–07, Q. Luo and T. J. Wang(罗强、王同军) 0822 (isotype, Herbarium of Xichang College).

本变种与原变种的主要区别特征为:花瓣长2~2.6 cm,宽1.6~2.2 cm,花瓣内面基部被柔毛,果扁球形,径1.7~2.1 cm,高1~1.3 cm。

我们采集了含苞待放的银木荷及扁果银木荷花,自然干燥后将两者的花粉粒直接挑于贴有双面胶的载物台上喷金,置于扫描电镜下观察花粉形态及表面纹饰。结果表明,两者的花粉粒均为长球形,外壁纹饰均为网状,但银木荷花粉粒外壁具穿孔,而新变种扁果银木荷的外壁不具穿孔(图2)。花粉粒表面纹饰的区别是鉴定不同类群的重要依据之一,花粉粒外壁纹饰的区别也证实了扁果银木荷作为银木荷的变种是可以成立的。

收稿日期:2010-01-07 接受日期:2011-03-07

基金项目:四川省教育厅重点项目(10ZA066)资助

作者简介:罗强(1972~),男,硕士,副教授,主要从事植物分类研究, email: luoq72@sina.com

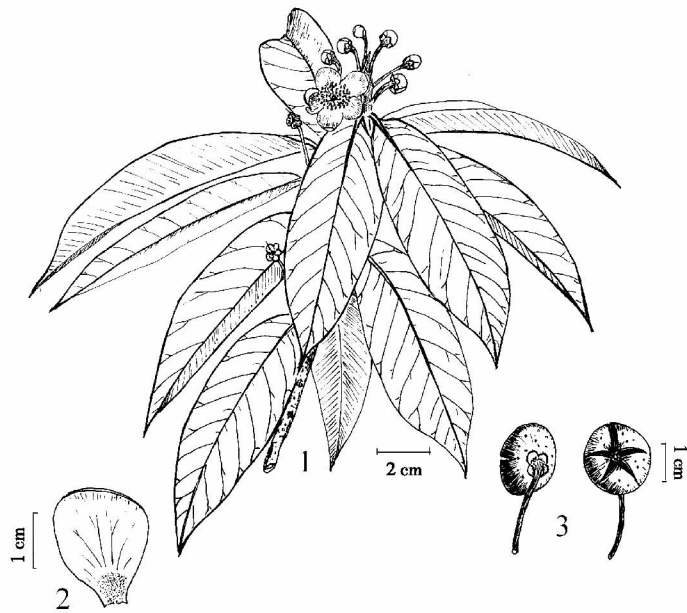


图1 扁果银木荷

Fig. 1 *Schima argentea* Pritz. var. *platycarpa* Q. Luo

1. 花枝 Flowering brnch; 2. 花瓣内面, 示基部毛被 Inner surface of petal, showing trichome at base; 3. 蒴果 Capsules (罗强根据标本 0821 绘 Drawn by Q. Luo based on 0821)

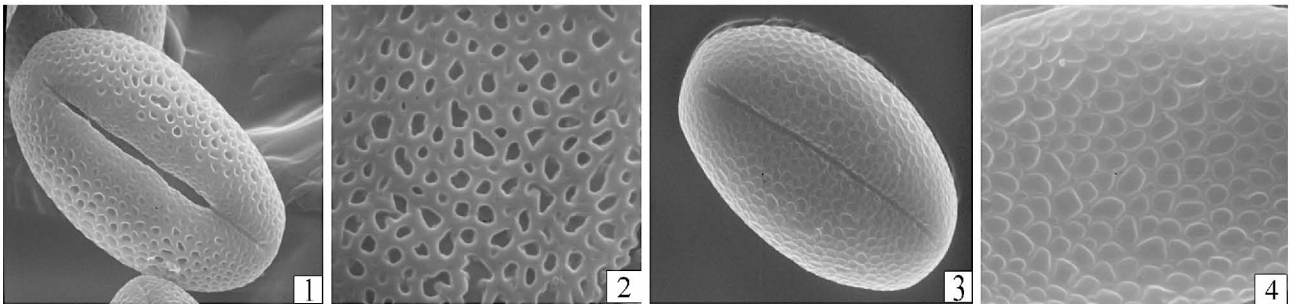


图2 银木荷和扁果银木荷的花粉形态

Fig. 2 Pollen morphology of *Schima argentea* Pritz. var. *argentea* and *S. argentea* Pritz. var. *platycarpa* Q. Luo

1~2. 银木荷 *S. argentea* Pritz. var. *argentea*; 1. 花粉粒 Pollen; 2. 外壁纹饰 Exine ornamentation; 3~4. 扁果银木荷 *S. argentea* Pritz. var. *platycarpa* Q. Luo; 3. 花粉粒 Pollen; 4. 外壁纹饰 Exine ornamentation.

参考文献

[1] Min T L, Bartholomew B. Theaceae [M]// Flora of China Volume 12. Beijing: Science Press, 2007: 420-424.

[2] Chang H T (张宏达), Ren S X (任善湘). *Schima* [M]// Flora Reipublicae Popularis Sinica Tomus 49(3). Beijing: Science Press, 1999: 211-219. (in Chinese)